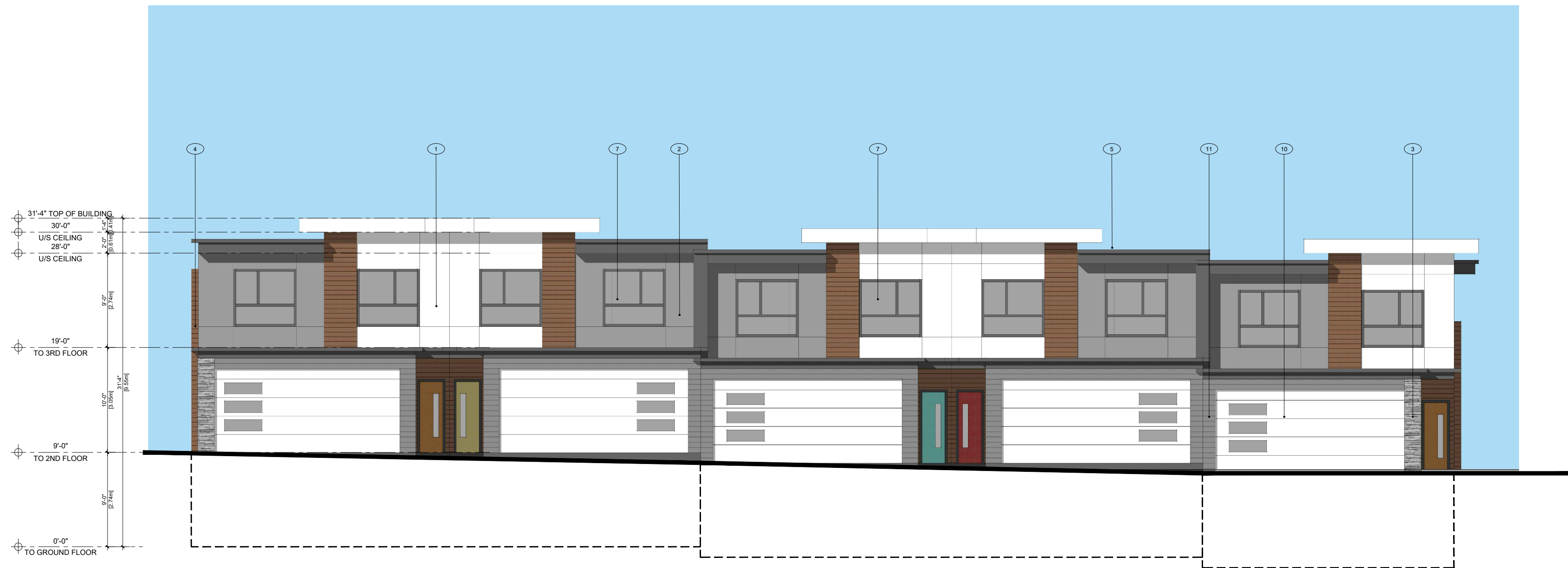




1 BUILDING 1 - NORTH
Scale: 1/8" = 1'-0"



2 BUILDING 1 - EAST
Scale: 1/8" = 1'-0"



3 BUILDING 1 - SOUTH
Scale: 1/8" = 1'-0"



4 BUILDING 1 - WEST
Scale: 1/8" = 1'-0"

EXTERIOR MATERIAL LEGEND

- | | | |
|---|---|---|
| 1 HARDIE PANEL SMOOTH W/ REVIEW LINES - COLOR: LIGHT GREY | 5 METAL CLADDING - COLOR: CHARCOAL | 9 ALUMINUM RAILING, COLOUR: DARK GREY |
| 2 HARDIE PANEL SMOOTH W/ REVIEW LINES - COLOR: DARK GREY | 6 SEALED DOUBLE GLAZED FRENCH DOOR | 10 COMMERCIAL PARKING OVERHEAD ENTRY DOOR |
| 3 STONE VENEER- COLOR: COLORADO GREY | 7 SEALED DOUBLE GLAZED P.V.C. WINDOW | 11 HARDIE SIDING - COLOR: DARK GREY |
| 4 HARDIE SIDING/SOFFIT - COLOR: CEDAR | 8 ALUMINUM AND GLASS RAILING, COLOUR: DARK GREY | |

RECEIVED
D P 1 3 4 3
2024-JUL-09
Current Planning



1200 West 73rd Ave (Airport Square) Suite 940 Vancouver B.C. V6P 6G5
Office: 604 558 3064
Email: info@pwaarchitecture.com
www.pwaarchitecture.com

ISSUES	DATE
4	
3	
2	
1 ISSUED FOR DEVELOPMENT PERMIT APPLICATION	JUN 19, 2024

PROJECT NUMBER	A477
DRAWN BY	FC
CHECKED BY	PY

COPYRIGHT RESERVED. THIS PLAN AND DESIGN ARE, AND AT ALL TIMES REMAIN THE EXCLUSIVE PROPERTY OF PACIFIC WEST ARCHITECTURE INC. AND CANNOT BE USED OR REPRODUCED WITHOUT THE ARCHITECT'S WRITTEN CONSENT.

PROJECT
NEW TOWNHOUSE DEVELOPMENT
3530 HILLSIDE AVE
NANAIMO, BC
DRAWING TITLE
BUILDING ELEVATIONS

DRAWING No.

A3.01



1 BUILDING 2 - NORTH
Scale: 1/8" = 1'-0"



3 BUILDING 2 - SOUTH
Scale: 1/8" = 1'-0"



2 BUILDING 2 - EAST
Scale: 1/8" = 1'-0"



4 BUILDING 2 - WEST
Scale: 1/8" = 1'-0"

EXTERIOR MATERIAL LEGEND

- | | | | | | |
|---|---|---|---|----|--|
| 1 | HARDIE PANEL SMOOTH W/ REVIEW LINES - COLOR: LIGHT GREY | 5 | METAL CLADDING - COLOR: CHARCOAL | 9 | ALUMINUM RAILING, COLOUR: DARK GREY |
| 2 | HARDIE PANEL SMOOTH W/ REVIEW LINES - COLOR: DARK GREY | 6 | SEALED DOUBLE GLAZED FRENCH DOOR | 10 | COMMERCIAL PARKING OVERHEAD ENTRY DOOR |
| 3 | STONE VENEER- COLOR: COLORADO GREY | 7 | SEALED DOUBLE GLAZED P.V.C. WINDOW | 11 | HARDIE SIDING - COLOR: DARK GREY |
| 4 | HARDIE SIDING/SOFFIT - COLOR: CEDAR | 8 | ALUMINUM AND GLASS RAILING, COLOUR: DARK GREY | | |

RECEIVED
DP1343
2024-JUL-09
Current Planning



1200 West 73rd Ave (Airport Square) Suite 940 Vancouver B.C. V6P 6G5
Office: 604 558 3064 Email: info@pwaarchitecture.com www.pwaarchitecture.com

ISSUES	DATE
4	
3	
2	
1	ISSUED FOR DEVELOPMENT PERMIT APPLICATION JUN 19, 2024

PROJECT NUMBER	A477
DRAWN BY	FC
CHECKED BY	PY

COPYRIGHT RESERVED. THIS PLAN AND DESIGN ARE, AND AT ALL TIMES REMAIN THE EXCLUSIVE PROPERTY OF PACIFIC WEST ARCHITECTURE INC. AND CANNOT BE USED OR REPRODUCED WITHOUT THE ARCHITECT'S WRITTEN CONSENT.

PROJECT
NEW TOWNHOUSE DEVELOPMENT
3530 HILLSIDE AVE
NANAIMO, BC
DRAWING TITLE
BUILDING ELEVATIONS

DRAWING No.

A3.02



1 BUILDING 3 - NORTH
Scale: 1/8"= 1'-0"



2 BUILDING 3 - EAST
Scale: 1/8"= 1'-0"



3 BUILDING 3 - SOUTH
Scale: 1/8"= 1'-0"



4 BUILDING 3 - WEST
Scale: 1/8"= 1'-0"

EXTERIOR MATERIAL LEGEND

- | | | |
|---|---|---|
| 1 HARDIE PANEL SMOOTH W/ REVIEW LINES - COLOR: LIGHT GREY | 5 METAL CLADDING - COLOR: CHARCOAL | 9 ALUMINUM RAILING, COLOUR: DARK GREY |
| 2 HARDIE PANEL SMOOTH W/ REVIEW LINES - COLOR: DARK GREY | 6 SEALED DOUBLE GLAZED FRENCH DOOR | 10 COMMERCIAL PARKING OVERHEAD ENTRY DOOR |
| 3 STONE VENEER- COLOR: COLORADO GREY | 7 SEALED DOUBLE GLAZED P.V.C. WINDOW | 11 HARDIE SIDING - COLOR: DARK GREY |
| 4 HARDIE SIDING/SOFFIT - COLOR: CEDAR | 8 ALUMINUM AND GLASS RAILING, COLOUR: DARK GREY | |

RECEIVED
DP1343
2024-JUL-09
Current Planning



1200 West 73rd Ave (Airport Square) Suite 940 Vancouver B.C. V6P 6G5
Office: 604 558 3064 Email: info@pwaarchitecture.com www.pwaarchitecture.com

ISSUES	DATE
4	
3	
2	
1 ISSUED FOR DEVELOPMENT PERMIT APPLICATION	JUN 19, 2024

PROJECT NUMBER	A477
DRAWN BY	FC
CHECKED BY	PY

COPYRIGHT RESERVED. THIS PLAN AND DESIGN ARE, AND AT ALL TIMES REMAIN THE EXCLUSIVE PROPERTY OF PACIFIC WEST ARCHITECTURE INC. AND CANNOT BE USED OR REPRODUCED WITHOUT THE ARCHITECT'S WRITTEN CONSENT.

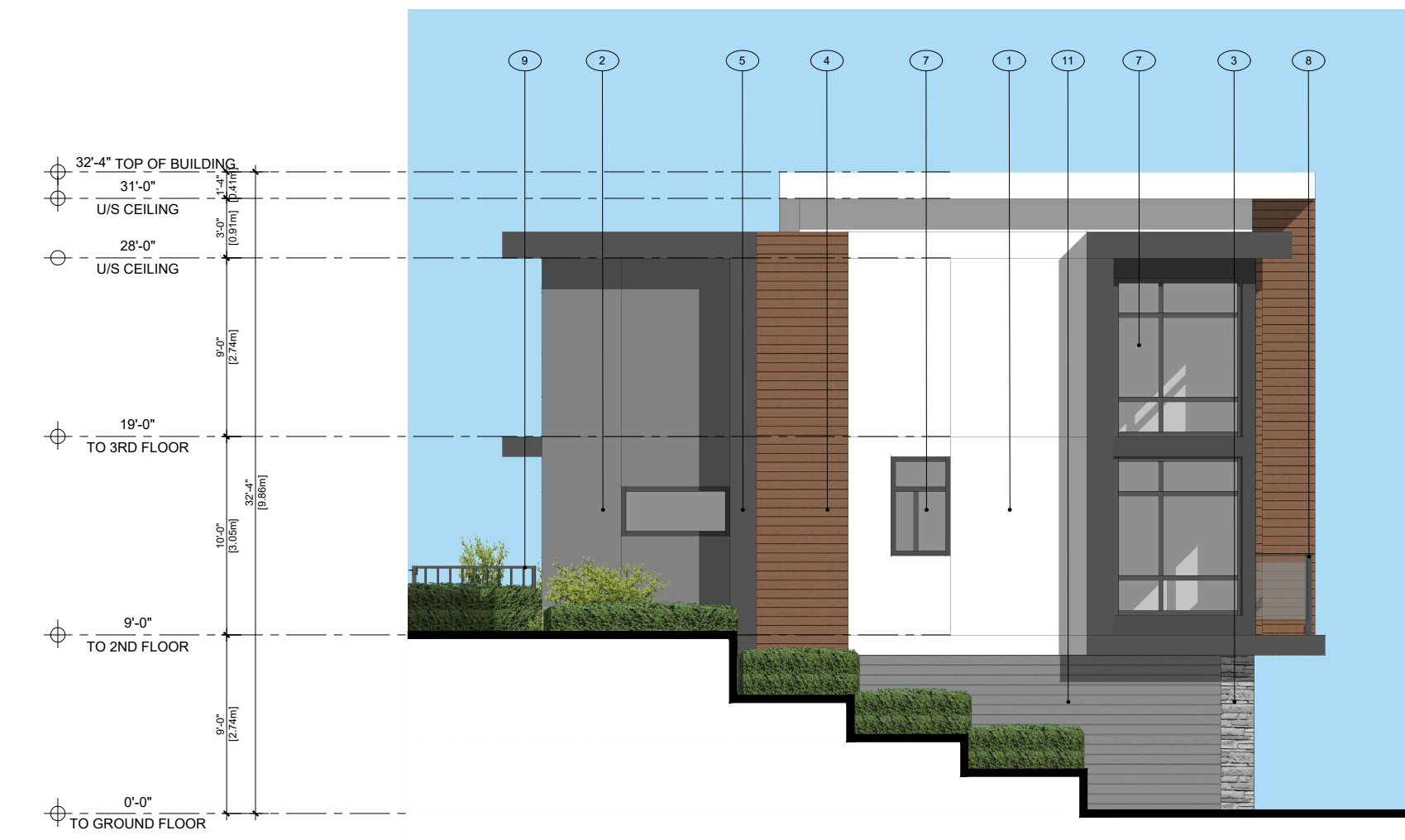
PROJECT
NEW TOWNHOUSE DEVELOPMENT
3530 HILLSIDE AVE
NANAIMO, BC
DRAWING TITLE
BUILDING ELEVATIONS

DRAWING No.

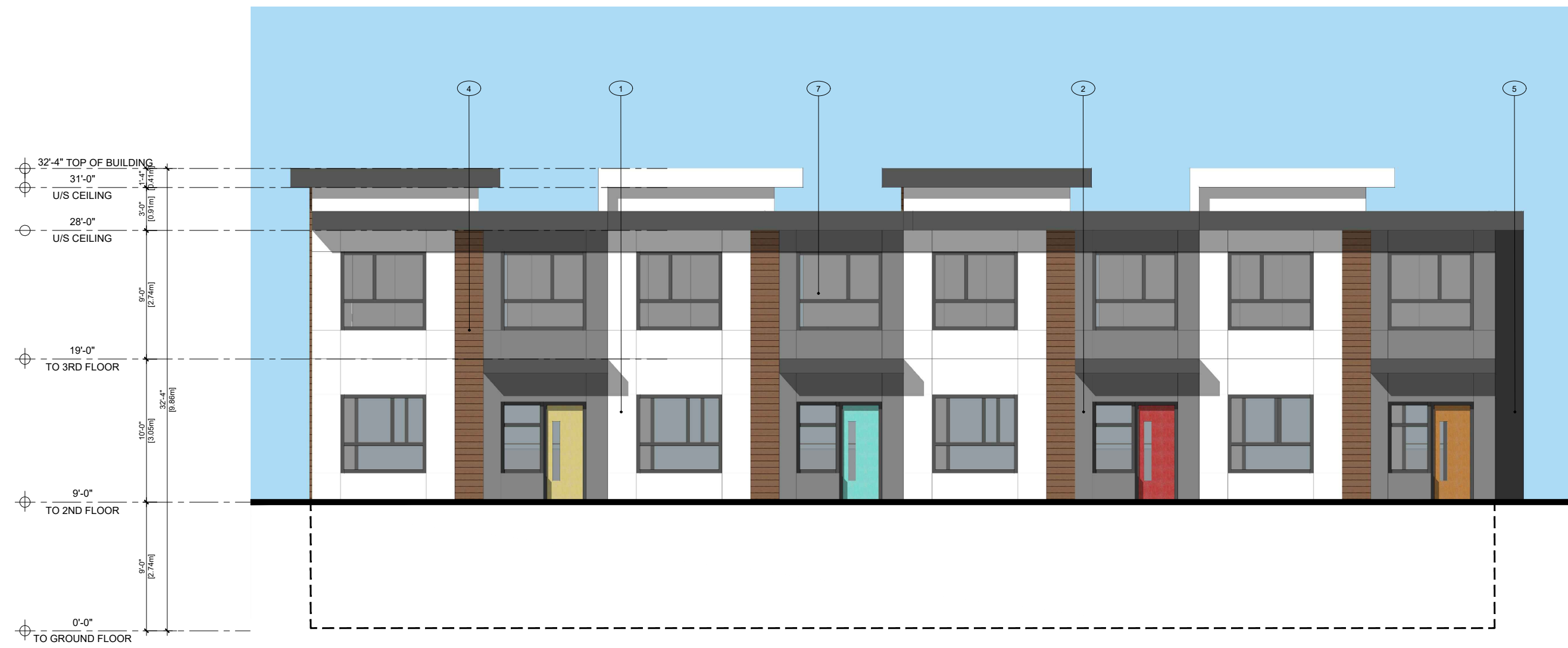
A3.03



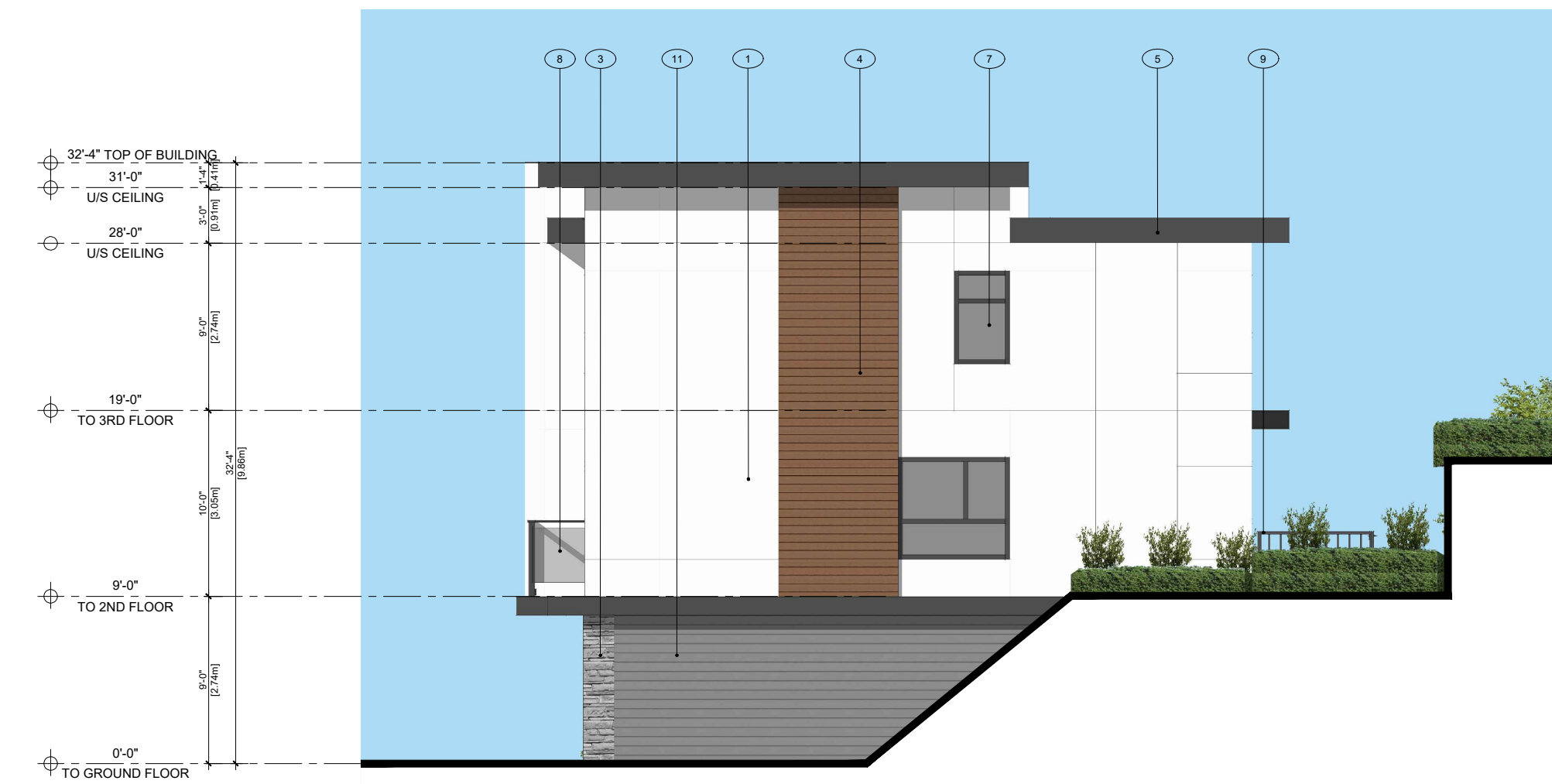
1 BUILDING 4 - NORTH
Scale: 1/8"= 1'-0"



2 BUILDING 4 - EAST
Scale: 1/8"= 1'-0"



3 BUILDING 4 - SOUTH
Scale: 1/8"= 1'-0"



4 BUILDING 4 - WEST
Scale: 1/8"= 1'-0"

EXTERIOR MATERIAL LEGEND

- | | | |
|---|---|---|
| 1 HARDIE PANEL SMOOTH W/ REVIEW LINES - COLOR: LIGHT GREY | 5 METAL CLADDING - COLOR: CHARCOAL | 9 ALUMINUM RAILING, COLOUR: DARK GREY |
| 2 HARDIE PANEL SMOOTH W/ REVIEW LINES - COLOR: DARK GREY | 6 SEALED DOUBLE GLAZED FRENCH DOOR | 10 COMMERCIAL PARKING OVERHEAD ENTRY DOOR |
| 3 STONE VENEER- COLOR: COLORADO GREY | 7 SEALED DOUBLE GLAZED P.V.C. WINDOW | 11 HARDIE SIDING - COLOR: DARK GREY |
| 4 HARDIE SIDING/SOFFIT - COLOR: CEDAR | 8 ALUMINUM AND GLASS RAILING, COLOUR: DARK GREY | |

RECEIVED
DP1343
2024-JUL-09
Current Planning



**pacific
west
architecture**

1200 West 73rd Ave (Airport Square) Suite 940
Vancouver B.C. V6P 6G5
Office: 604 558 3064
Email: info@pwaarchitecture.com
www.pwaarchitecture.com

ISSUES	DATE
4	
3	
2	
1 ISSUED FOR DEVELOPMENT PERMIT APPLICATION	JUN 19, 2024

PROJECT NUMBER	A477
DRAWN BY	FC
CHECKED BY	PY

COPYRIGHT RESERVED. THIS PLAN AND DESIGN ARE, AND AT ALL TIMES REMAIN THE EXCLUSIVE PROPERTY OF PACIFIC WEST ARCHITECTURE INC. AND CANNOT BE USED OR REPRODUCED WITHOUT THE ARCHITECT'S WRITTEN CONSENT.

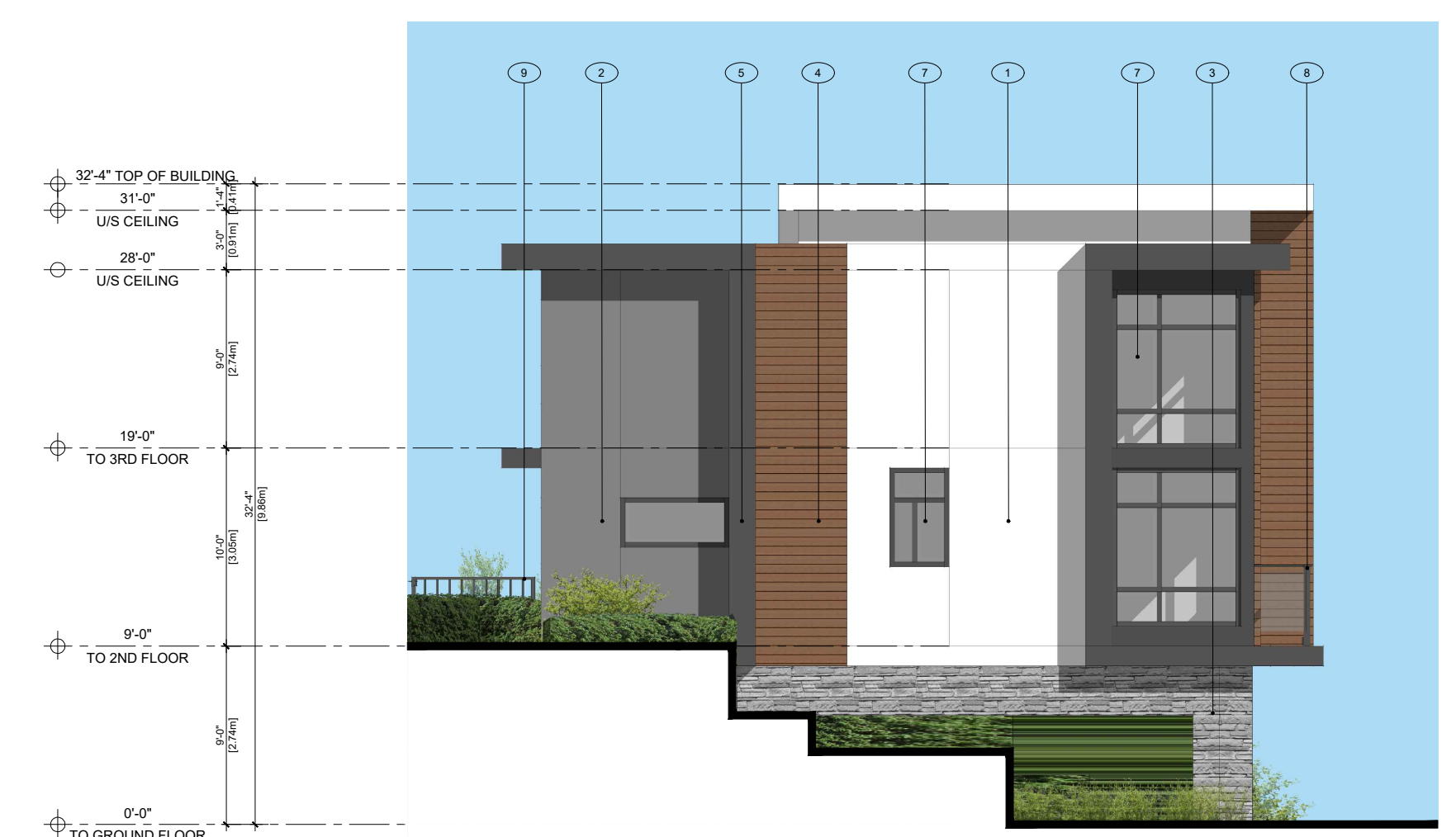
PROJECT
NEW TOWNHOUSE DEVELOPMENT
3530 HILLSIDE AVE
NANAIMO, BC
DRAWING TITLE
BUILDING ELEVATIONS

DRAWING No.

A3.04



1 BUILDING 5 - NORTH
Scale: 1/8" = 1'-0"



2 BUILDING 5 - EAST
Scale: 1/8" = 1'-0"



3 BUILDING 5 - SOUTH
Scale: 1/8" = 1'-0"



4 BUILDING 5 - WEST
Scale: 1/8" = 1'-0"

EXTERIOR MATERIAL LEGEND					
1	HARDIE PANEL SMOOTH W/ REVIEW LINES - COLOR: LIGHT GREY	5	METAL CLADDING - COLOR: CHARCOAL	9	ALUMINUM RAILING, COLOUR: DARK GREY
2	HARDIE PANEL SMOOTH W/ REVIEW LINES - COLOR: DARK GREY	6	SEALED DOUBLE GLAZED FRENCH DOOR	10	COMMERCIAL PARKING OVERHEAD ENTRY DOOR
3	STONE VENEER- COLOR: COLORADO GREY	7	SEALED DOUBLE GLAZED P.V.C. WINDOW	11	HARDIE SIDING - COLOR: DARK GREY
4	HARDIE SIDING/SOFFIT - COLOR: CEDAR	8	ALUMINUM AND GLASS RAILING, COLOUR: DARK GREY		

RECEIVED
D P 1 3 4 3
2024-JUL-09
Current Planning



1200 West 73rd Ave (Airport Square) Suite 940 Vancouver B.C. V6P 6G5
Office: 604 558 3064 Email: info@pwaarchitecture.com www.pwaarchitecture.com

ISSUES	DATE
4	
3	
2	
1	ISSUED FOR DEVELOPMENT PERMIT APPLICATION JUN 19, 2024

PROJECT NUMBER	A477
DRAWN BY	FC
CHECKED BY	PY

COPYRIGHT RESERVED. THIS PLAN AND DESIGN ARE, AND AT ALL TIMES REMAIN THE EXCLUSIVE PROPERTY OF PACIFIC WEST ARCHITECTURE INC. AND CANNOT BE USED OR REPRODUCED WITHOUT THE ARCHITECT'S WRITTEN CONSENT.

PROJECT
NEW TOWNHOUSE DEVELOPMENT
3530 HILLSIDE AVE
NANAIMO, BC
DRAWING TITLE
BUILDING ELEVATIONS

DRAWING No.

A3.05



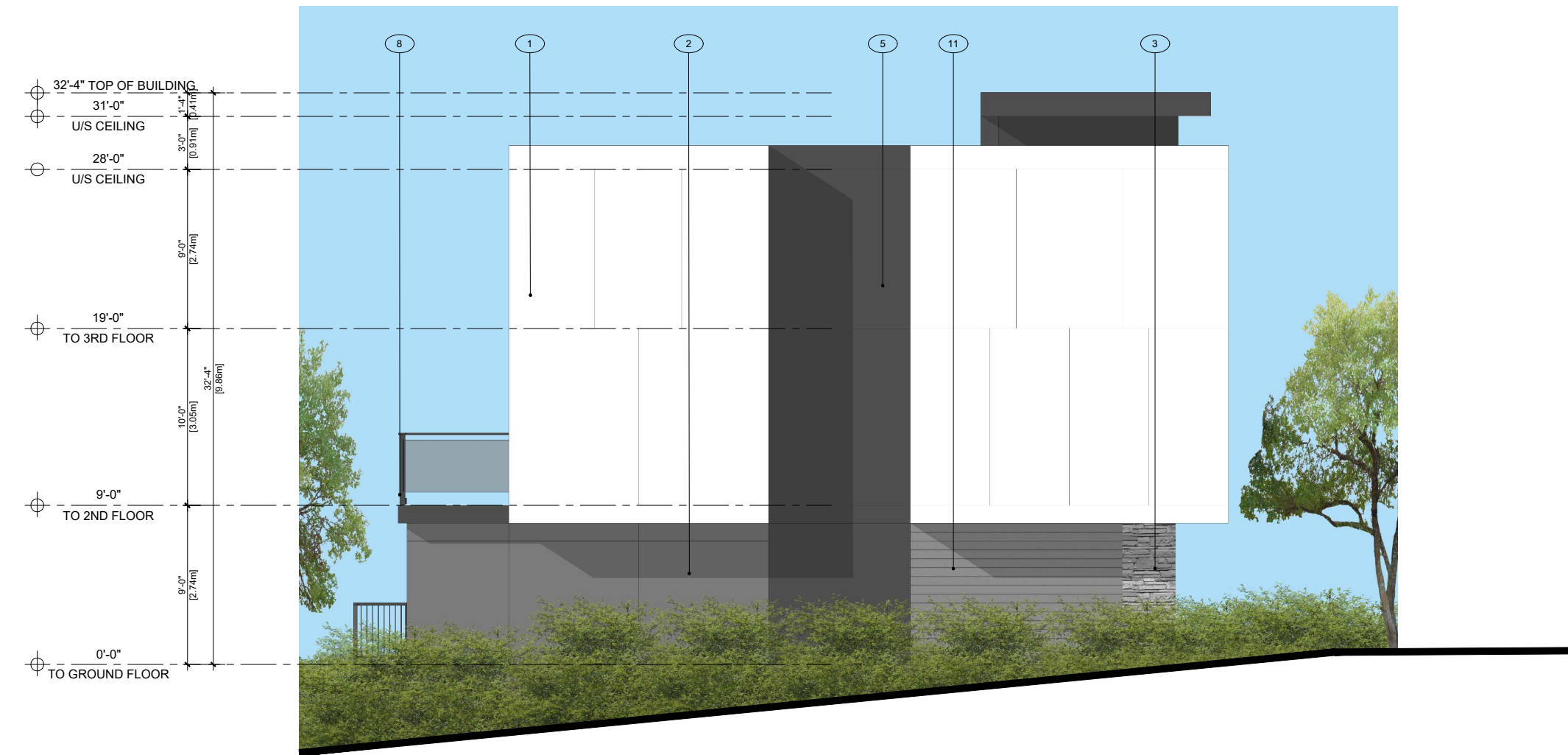
1 BUILDING 6 - NORTH
Scale: 1/8"= 1'-0"



2 BUILDING 6 - EAST
Scale: 1/8"= 1'-0"



3 BUILDING 6 - SOUTH
Scale: 1/8"= 1'-0"



4 BUILDING 6 - WEST
Scale: 1/8"= 1'-0"

EXTERIOR MATERIAL LEGEND

- | | | |
|---|---|---|
| 1 HARDIE PANEL SMOOTH W/ REVIEW LINES - COLOR: LIGHT GREY | 5 METAL CLADDING - COLOR: CHARCOAL | 9 ALUMINUM RAILING, COLOUR: DARK GREY |
| 2 HARDIE PANEL SMOOTH W/ REVIEW LINES - COLOR: DARK GREY | 6 SEALED DOUBLE GLAZED FRENCH DOOR | 10 COMMERCIAL PARKING OVERHEAD ENTRY DOOR |
| 3 STONE VENEER- COLOR: COLORADO GREY | 7 SEALED DOUBLE GLAZED P.V.C. WINDOW | 11 HARDIE SIDING - COLOR: DARK GREY |
| 4 HARDIE SIDING/SOFFIT - COLOR: CEDAR | 8 ALUMINUM AND GLASS RAILING, COLOUR: DARK GREY | |

RECEIVED
DP1343
2024-JUL-09
Current Planning



1200 West 73rd Ave (Airport Square) Suite 940 Vancouver B.C. V6P 6G5
Office: 604 558 3064 Email: info@pwaarchitecture.com www.pwaarchitecture.com

ISSUES	DATE
4	
3	
2	
1 ISSUED FOR DEVELOPMENT PERMIT APPLICATION	JUN 19, 2024

PROJECT NUMBER	A477
DRAWN BY	FC
CHECKED BY	PY

COPYRIGHT RESERVED. THIS PLAN AND DESIGN ARE, AND AT ALL TIMES REMAIN THE EXCLUSIVE PROPERTY OF PACIFIC WEST ARCHITECTURE INC. AND CANNOT BE USED OR REPRODUCED WITHOUT THE ARCHITECT'S WRITTEN CONSENT.

PROJECT
NEW TOWNHOUSE DEVELOPMENT
3530 HILLSIDE AVE
NANAIMO, BC
DRAWING TITLE
BUILDING ELEVATIONS

DRAWING No.

A3.06